

# RAIR Coffs Harbour R21

## 72 Marcia Street, Coffs Harbour, NSW, 2450

### Contract Issue

#### Drawing Schedule

Drawing Number	Drawing Title	Scale
R21-LA-000	Landscape Coversheet	N/A
R21-LA-101	Landscape Plan	1:150
R21-LA-501	Landscape Details & Planting Schedule	As Shown



Site Plan | Scale 1:250

© 2021 Site Image (NSW) Pty Ltd ABN 44 801 262 380 as agent for Site Image NSW Partnership. All rights reserved. This drawing is copyright and shall not be reproduced or copied in any form or by any means (graphic, electronic or mechanical including photocopy) without the written permission of Site Image (NSW) Pty Ltd Any license, expressed or implied, to use this document for any purpose what so ever is restricted to the terms of the written agreement between Site Image (NSW) Pty Ltd and the instructing party.

The contractor shall check and verify all work on site (including work by others) before commencing the landscape installation. Any discrepancies are to be reported to the Project Manager or Landscape Architect prior to commencing work. Do not scale this drawing. Any required dimensions not shown shall be referred to the Landscape Architect for confirmation.

E	Architectural Coordination	LW	NM	11.03.2022
D	Architectural Coordination	LW	NM	06.12.2021
C	Updated Revision	RH	NM	01.12.2021
B	Revised for NSW Comments	KP	NM	13.10.2021
A	Development Application	KP	NM	01.09.2021
Issue	Revision Description	Drawn	Check	Date



Project  
RAIR Coffs Harbour R21  
72 Marcia Street, Coffs Harbour  
NSW 2450

Level 1, 3-5 Baptist Street  
Redfern NSW 2016  
Australia

Tel: (61 2) 8332 5600  
Fax: (61 2) 9698 2877  
www.siteimage.com.au

Site Image (NSW) Pty Ltd  
ABN 44 801 262 380

S I T E I M A G E



Landscape Architects

CONTRACT ISSUE

Drawing Name  
Landscape Coversheet

Scale	Drawing Number	Issue
Job Number	R21-LA-000	E
SS21-4791		

NOT FOR CONSTRUCTION



The contractor shall check and verify all work on site (including work by others) before commencing the landscape installation. Any discrepancies are to be reported to the Project Manager or Landscape Architect prior to commencing work. Do not scale this drawing. Any required dimensions not shown shall be referred to the Landscape Architect for confirmation.

E	Architectural Coordination	LW	NM	11.03.2022
D	Architectural Coordination	LW	NM	06.12.2021
C	Updated Revision	RH	NM	01.12.2021
B	Architectural Coordination	KP	NM	13.10.2021
A	Development Application	KP	NM	01.09.2021
Issue	Revision Description	Drawn	Check	Date

- Legend**
- Boundary
  - Tree to be Removed
  - Tree to be Retained
  - Proposed Tree (Refer Schedule and Detail)
  - Massed Grasses and Groundcovers (Refer Schedule and Detail)
  - Shrubs and Accents (Refer Schedule and Detail)
  - Planting Matrix (Refer Schedule and Detail)

Key Plan



Project  
RAIR Coffs Harbour R21  
72 Marcia Street, Coffs Harbour  
NSW 2450

**S I T E I M A G E**  
Level 1, 3-5 Baptist Street  
Redfern NSW 2016  
Australia  
Tel: (61 2) 8332 5600  
Fax: (61 2) 9698 2877  
www.siteimage.com.au  
Site Image (NSW) Pty Ltd  
ABN 44 801 262 380  
Landscape Architects

**CONTRACT ISSUE**

Drawing Name  
Landscape Plan

Scale 1:150 @ A1  
Job Number  
Drawing Number  
Issue

SS21-4791 R21-LA-101 E



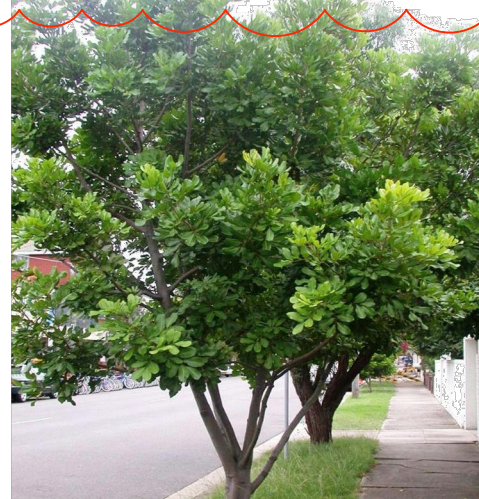
NOT FOR CONSTRUCTION



Plant Schedule						
	Botanic Name	Common Name	Mature Size (h x w) (m)	Spacing	Pot Size	Quantity
TREES						
Ca	<i>Cupaniopsis anacardioides</i>	Turkeroo	15 x 5	As Shown	100L	6
SHRUBS						
Ad	<i>Austromyrtus dulcis</i>	Midgen Berry	1 x .8	As Shown	200mm	83
LPP	<i>Loropetalum 'Purple Pixie'</i>	Purple Pixie	.3 x 1.2	As Shown	300mm	116
WAB	<i>Westringia fruticosa 'Aussie Box'</i>	Native Rosemary	0.6 x 0.6	As Shown	300mm	125
GRASSES AND GROUNDCOVERS						
Cg	<i>Carpobrotus glaucescens</i>	Pigface	.1 x 2	5/sqm	150mm	216
Dc	<i>Dianella caerulea</i>	Flax Lily	.4 x .4	5/sqm	150mm	198
Dr	<i>Dianella revoluta</i>	Blueberry Lily	1 x 2	5/sqm	150mm	143
GBR	<i>Grevillea Bronze Rambler</i>	Grevillea Bronze Rambler	.3 x 3	5/sqm	150mm	227
Hs	<i>Hibbertia scandens</i>	Snake Vine	.1 x 1	5/sqm	150mm	72
Hv	<i>Hardenbergia violacea</i>	False Sarsaparilla	3 x 2	5/sqm	150mm	121
LI	<i>Lomandra longifolia</i>	Matt Rush	1 x 1	4/sqm	150mm	114
Matrix Planting						
Total Area			323			
					/25sqm	
Ad	<i>Austromyrtus dulcis</i>	Midgen Berry	1	8	5	62
CLJ	<i>Callistemon 'Little John'</i>	Bottlebrush	1	1	8	98
WAB	<i>Westringia fruticosa 'Aussie Box'</i>	Native Rosemary	0.6	0.6	14	329
Hs	<i>Hibbertia scandens</i>	Trailing Guidea Flower	0.2	1	7	85
LI	<i>Lomandra longifolia</i>	Matt Rush	1	1	8	98
Dc	<i>Dianella caerulea</i>	Flax Lily	0.4	0.4	23	183
Hv	<i>Hardenbergia violacea</i>	False Sarsaparilla	3	2	12	171

D

Trees

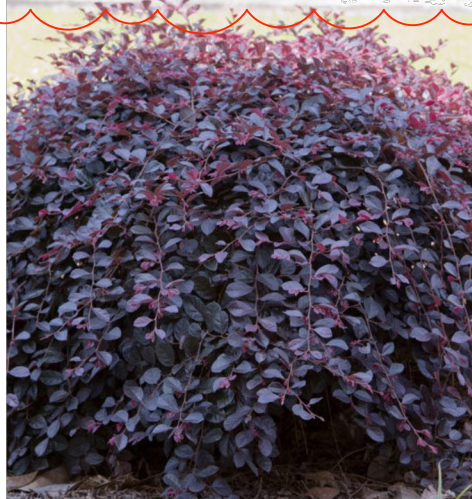


*Cupaniopsis anacardioides*  
Turkeroo

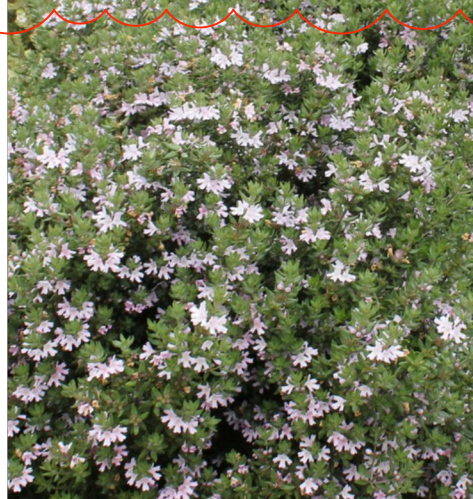
Shrubs and Accents



*Austromyrtus dulcis*  
Midgen Berry

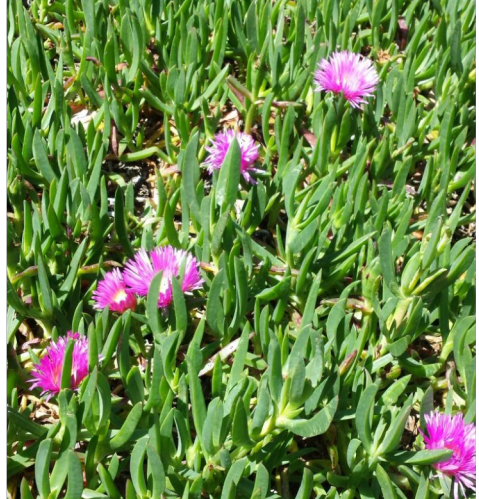


*Loropetalum 'Purple Pixie'*  
Purple Pixie



*Westringia fruticosa 'Aussie Box'*  
Rosemary

Groundcovers



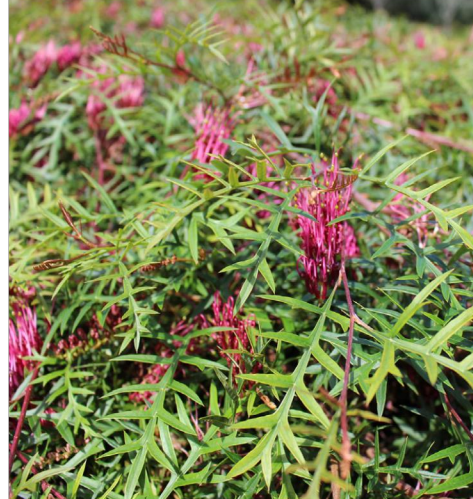
*Carpobrotus glaucescens*  
Pigface



*Dianella revoluta*  
Blueberry Lily



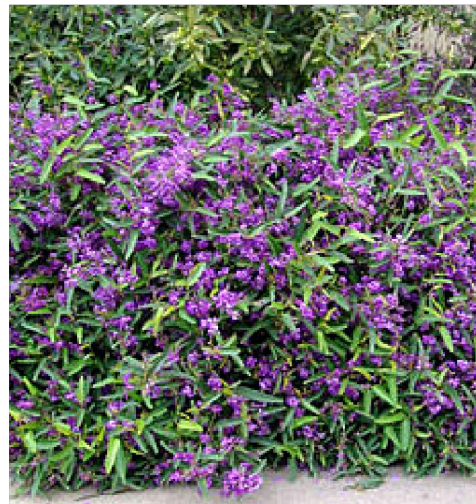
*Dianella caerulea*  
Flax Lily



*Grevillea Bronze Rambler*  
Grevillea Bronze Rambler



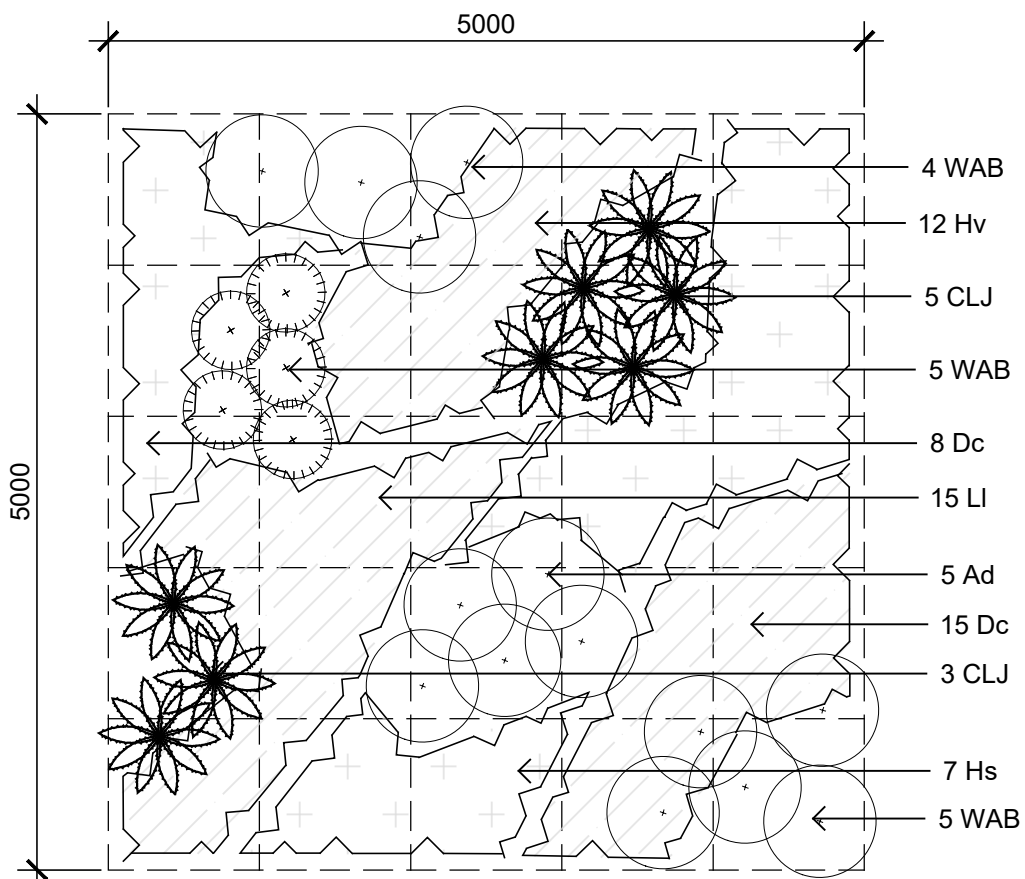
*Hibbertia scandens*  
Snake Vine



*Hardenbergia violacea*  
False Sarsaparilla

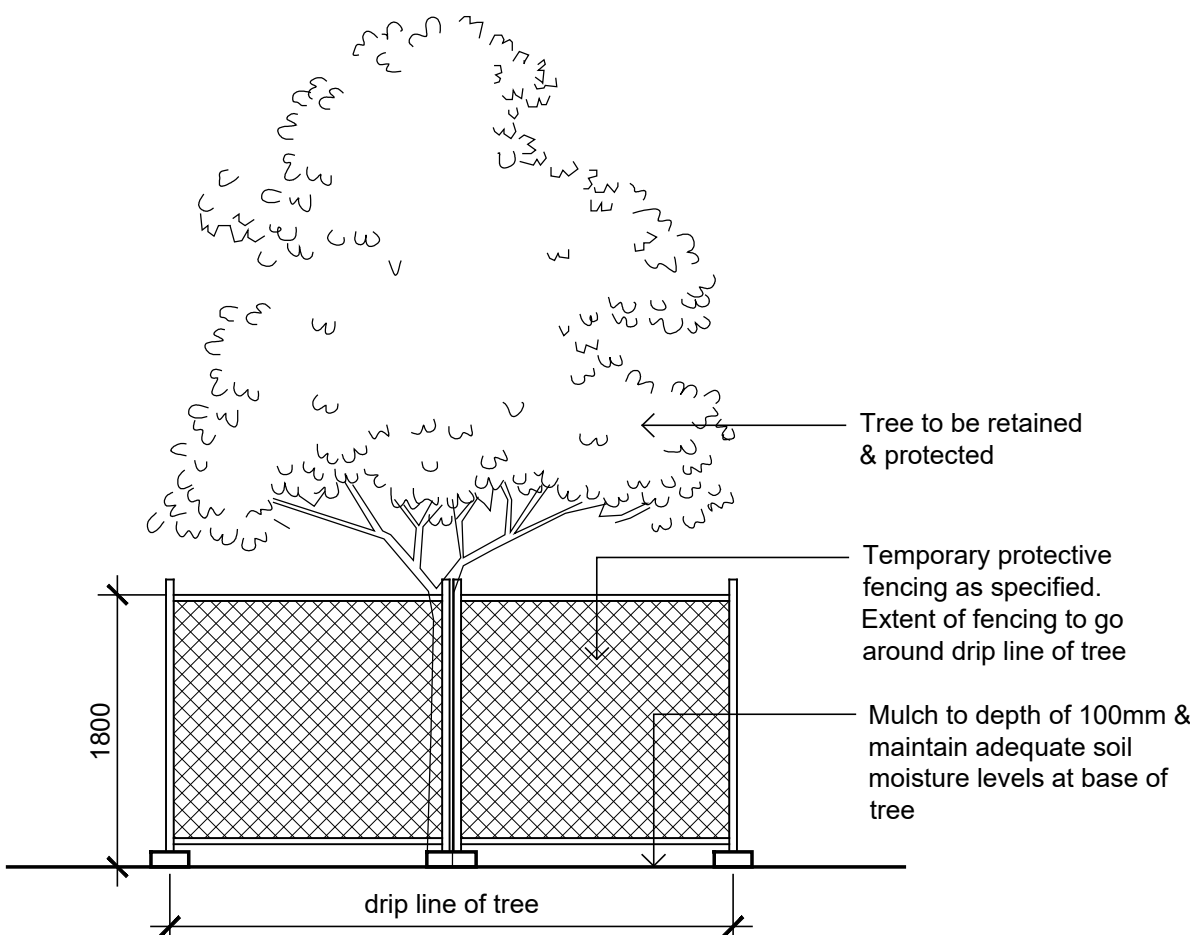


*Lomandra longifolia*  
Matt Rush



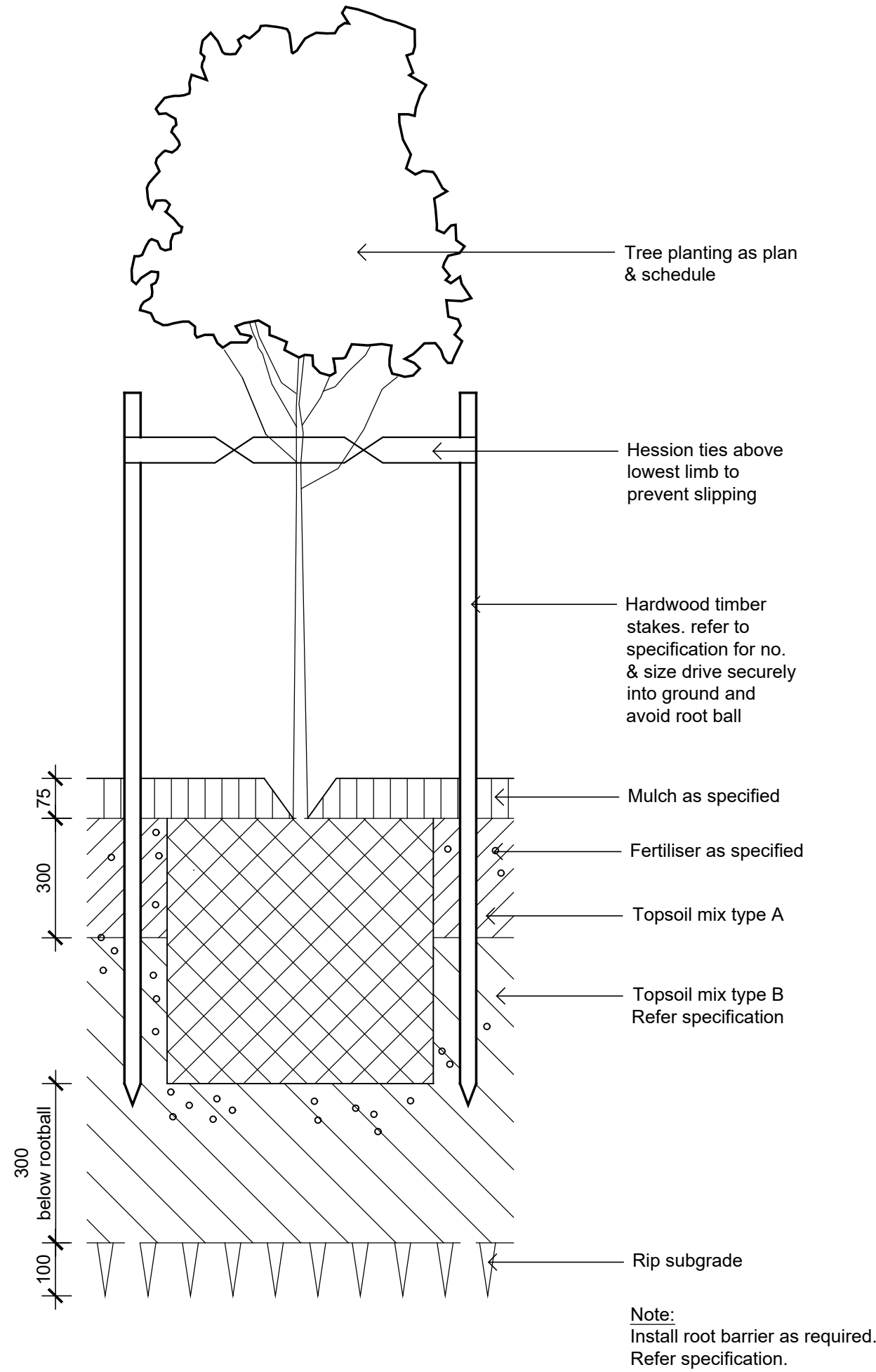
01 Planting Matrix

501 1:50



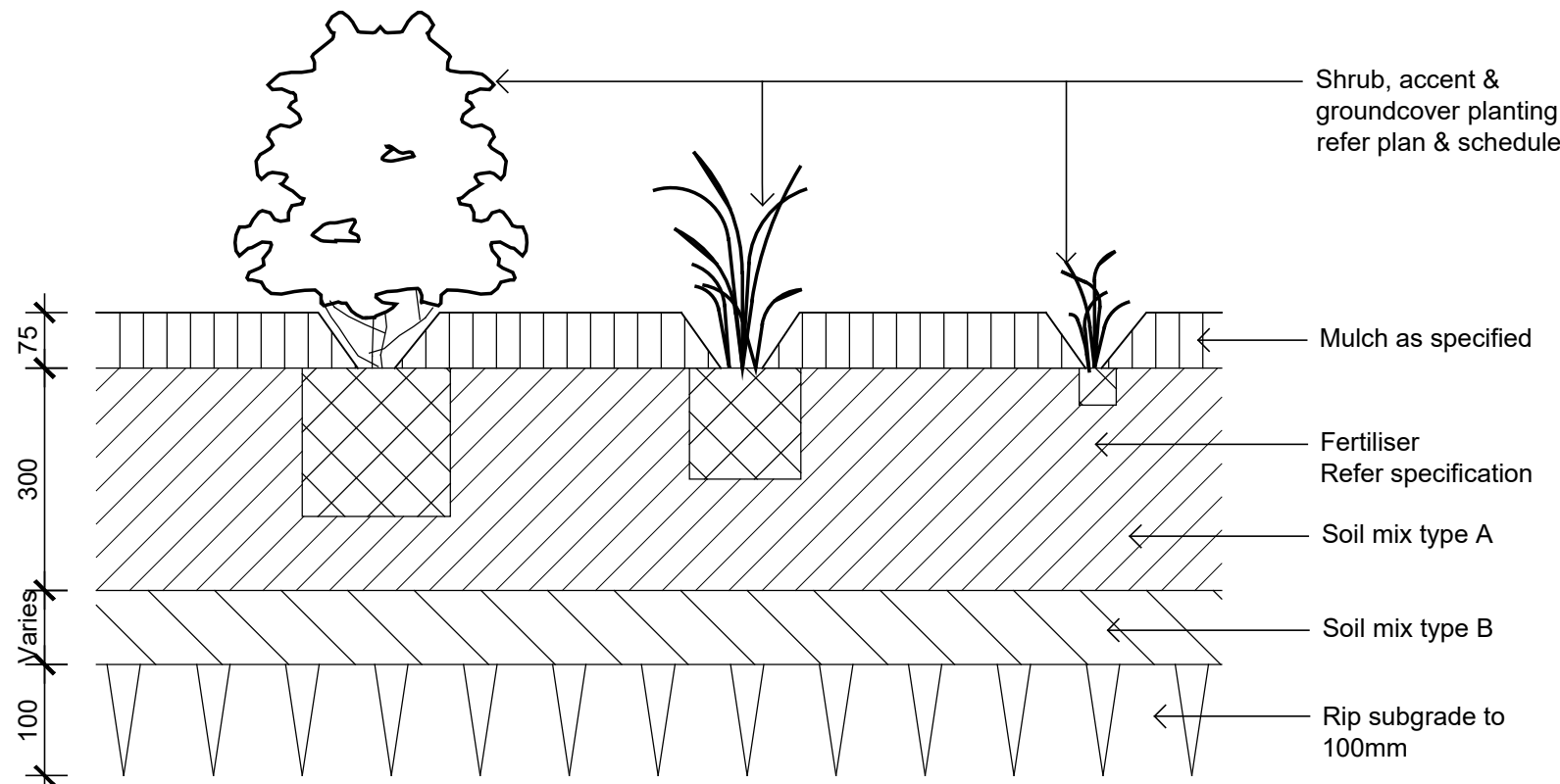
02 Detail - Tree Protection Fencing

501 1:50



03 Detail 75-200L Tree Planting on Grade

501 1:10



04 Detail Shrub Accent & Groundcover Planting on Grade

501 1:10

© 2021 Site Image (NSW) Pty Ltd ABN 44 801 262 380 as agent for Site Image NSW Partnership. All rights reserved. This drawing is copyright and shall not be reproduced or copied in any form or by any means (graphic, electronic or mechanical including photocopy) without the written permission of Site Image (NSW) Pty Ltd Any license, expressed or implied, to use this document for any purpose what so ever is restricted to the terms of the written agreement between Site Image (NSW) Pty Ltd and the instructing party.

The contractor shall check and verify all work on site (including work by others) before commencing the landscape installation. Any discrepancies are to be reported to the Project Manager or Landscape Architect prior to commencing work. Do not scale this drawing. Any required dimensions not shown shall be referred to the Landscape Architect for confirmation.

D	Architectural Coordination	LW	NM	06.12.2021
C	Updated Revision	RH	NM	01.12.2021
B	Architectural Coordination	KP	NM	13.10.2021
A	Development Application	KP	NM	01.09.2021
Issue	Revision Description	Drawn	Check	Date



Project  
RAIR Coffs Harbour R21  
72 Marcia Street, Coffs Harbour  
NSW 2450

Level 1, 3-5 Baptist Street  
Redfern NSW 2016  
Australia  
Tel: (61 2) 8332 5600  
Fax: (61 2) 9698 2877  
www.siteimage.com.au  
Site Image (NSW) Pty Ltd  
ABN 44 801 262 380



CONTRACT ISSUE

Drawing Name  
Landscape Details

Scale  
Job Number  
Drawing Number  
Issue

SS21-4791 R21-LA-501 D

NOT FOR CONSTRUCTION